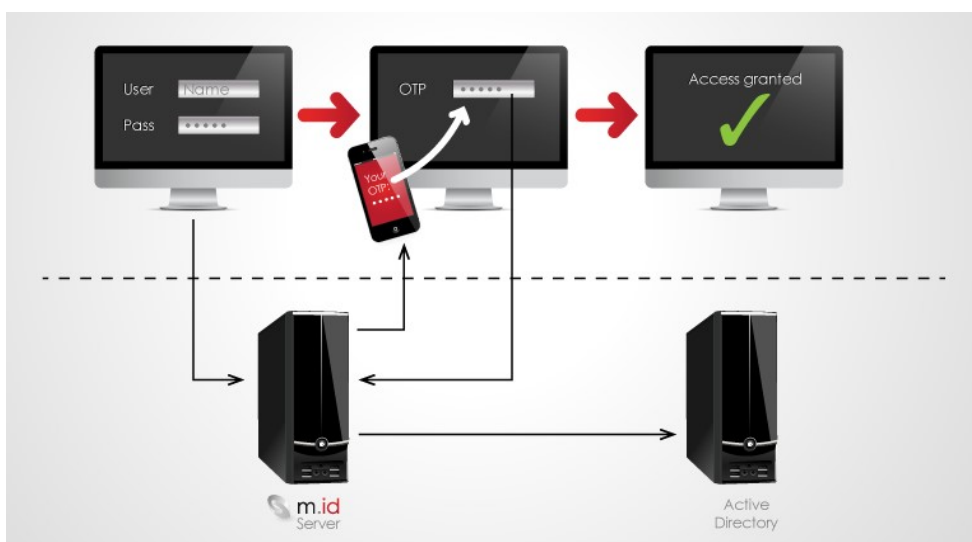


Swiss SafeLab M.ID Suite

Two-Factor Authentication and Text Message Gateway

The IT infrastructure of the company is physically and logically inseparable from the Internet. Therefore, the flawless identification of the user is more and more important. Thanks to the ubiquity of mobile phones, the two-factor authentication has prevailed. It combines a personal password with a one time password and has evolved into a comfortable and safe standard. In this environment, Swiss SafeLab offers a sophisticated solution, which was developed in collaboration with a Swiss University.



The Swiss SafeLab was founded in 2005 in order to continue to develop and market its high security and 100% Swiss solution.

The M.ID Mobile Identification Suite enables a secure user identification without carrying additional hardware. Through the delivery of a One Time Password (OTP) via text messaging, email or app during the login process – the user can login without conventional string lists or hardware tokens. This facilitates the work of the users and reduces the costs, as logistics and hardware investments disappear.

In addition, no hardware investments are needed for the server, as M.ID Suite is a pure software solution that can be installed on al-

ready existing servers. Due to the simple setup and low operating costs, the use of M.ID Server is extremely cost effective.

In addition, it is possible to automate processes that are usually handled by the Service Desk (e.g. password reset for Windows logon). Thus, with a high security standard, a significant reduction in operating costs can be achieved.

The license model is tied to the user and therefore scales without fixed costs starting with just a very small number of users.

Combined with an innovative Text Message Gateway a flexible solution emerges that also offers overseas travelers secure access to the sensitive data.

Strengths

- ◆ Simple licensing
- ◆ Low operating costs
- ◆ High reliability due to multiple redundancies
- ◆ Simple rollout
- ◆ Simple to expand
- ◆ Integration of international locations
- ◆ Flexible delivery of passcode
- ◆ Number of multiple interfaces
- ◆ High self-management degree

Class of industries

Cities and municipalities, hospitals, charities, cloud, IT Services, Insurance / Banking, food, energy, transportation, etc.



Fact Sheet - What makes the M.ID Suite so unique?

A solution for securing VPN, web pages, portals and appliances

User authentication

- ◆ Text Messaging
- ◆ E-Mail
- ◆ App
- ◆ Hardware Token
- ◆ Telephone & Helpdesk
- ◆ Cross-off-list
- ◆ Date / Timed access to user level
- ◆ Active Directory Password Reset

Multifaceted agents

- ◆ Interface for webshop / payments, etc.
- ◆ RADIUS
- ◆ Citrix Web Interface
- ◆ Microsoft ADFS
- ◆ Microsoft RDS
- ◆ Microsoft TMG
- ◆ Outlook Web App
- ◆ Outlook Mobile Services
- ◆ Password Reset

Administrative advantages

- ◆ No additional user management, rapid user activation
- ◆ High degree of self-management
- ◆ No token management
- ◆ Emotional attachment of the user to his personal equipment (BYOD)

Rollout and operation

- ◆ Simple integration into existing infrastructure
- ◆ Simple and rapid rollout, also possible in stages
- ◆ Simple update process even while online

Security

- ◆ Communication between the components is SSL secured and encrypted
- ◆ M.ID server can be operated with multiple instances (Reliability without extra costs)
- ◆ Several LDAP / Active Directories server accessible
- ◆ Alternative User DB
- ◆ Event logging to database/files/system event logs
- ◆ Notification by text message and email of errors and specified monitoring values
- ◆ Tested by Security Audits: RAV of 97.7%

Management Web GUI

- ◆ Real time display
- ◆ Test functionality
- ◆ OneView Status notification
- ◆ Update query

- ◆ M.ID User Interface Support
- ◆ Bulk Admin. (mass change)
- ◆ User configuration
- ◆ AD Support
- ◆ Security Control

Text Message Gateway

- ◆ International Text Message Gateway for passcode transmission
- ◆ Multiple Text Message Gateways can be configured
- ◆ Text Message Gateways by specifying fail over provider
- ◆ Support of any text message provider

Costs

- ◆ Low acquisition, start up and operating costs
- ◆ Scalability (investment protection)
- ◆ Customer-friendly licensing models on user basis.



swiss made software

The entire M.ID Suite solution is developed and maintained in Switzerland.

Swiss SafeLab GmbH

Neuengasse 20
3011 Bern
Switzerland
+41 31 932 31 86
www.swiss-safelab.com

Swiss SafeLab GmbH

The Swiss SafeLab GmbH is one of the leading suppliers of two-factor authentication products and Text Message Gateways in the Swiss market. The Swiss company was founded in 2005. Its customers include the cities of Berne and Thun, the BKW Energy AG, Energy Water Berne (EWB), Emmi, Swiss Red Cross, the compensation fund of Basel-Stadt.